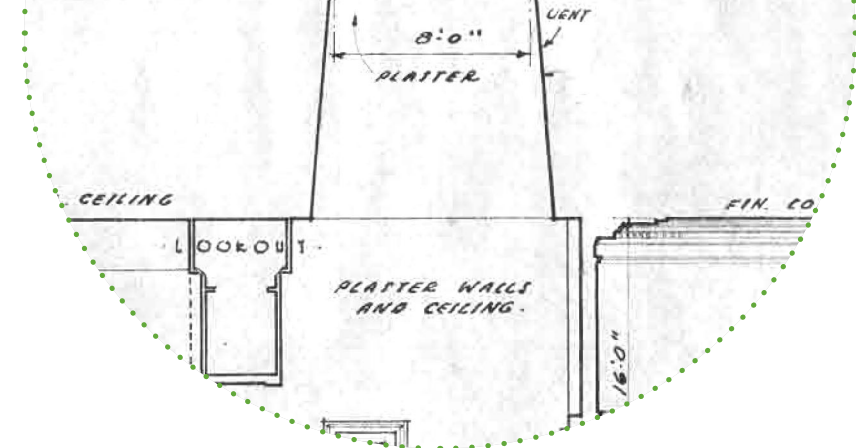
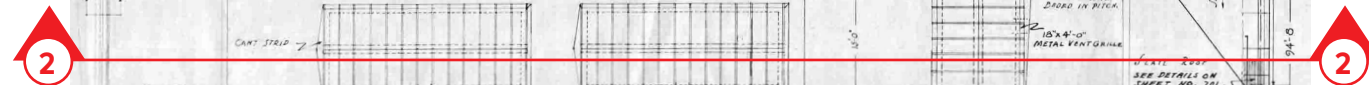


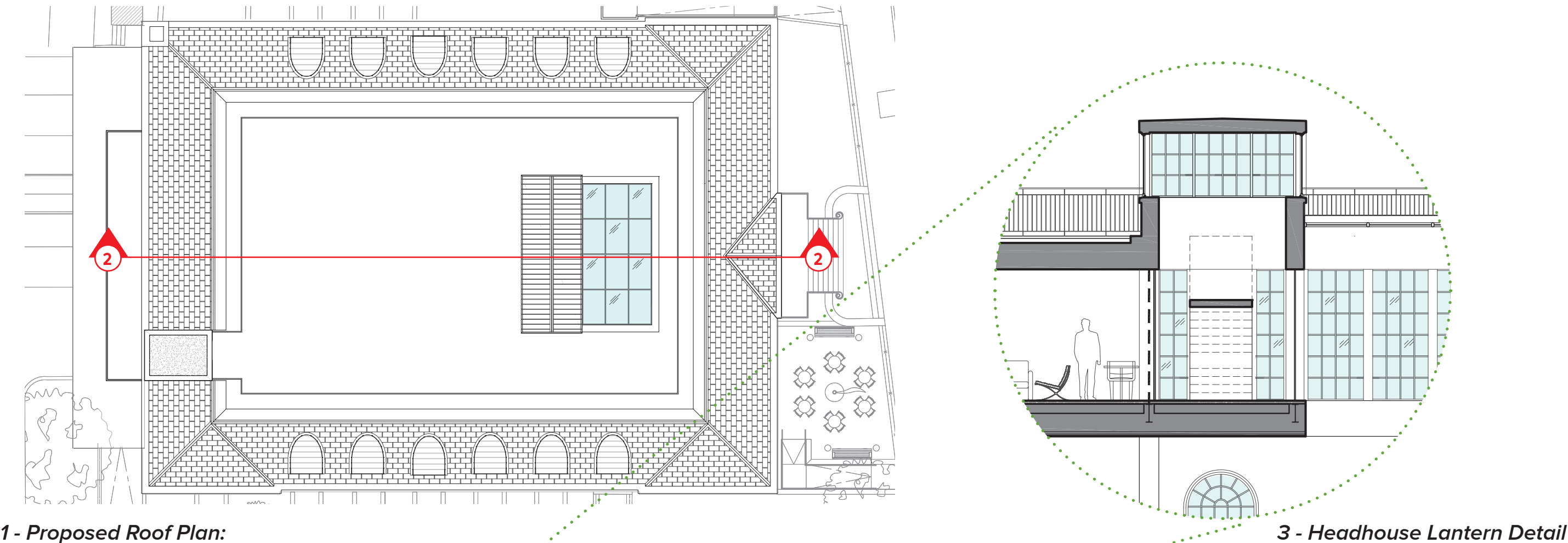
# UNION SQUARE FORMER POST OFFICE

## *Supplemental Information*

**DRAFT**  
04 DECEMBER 2015

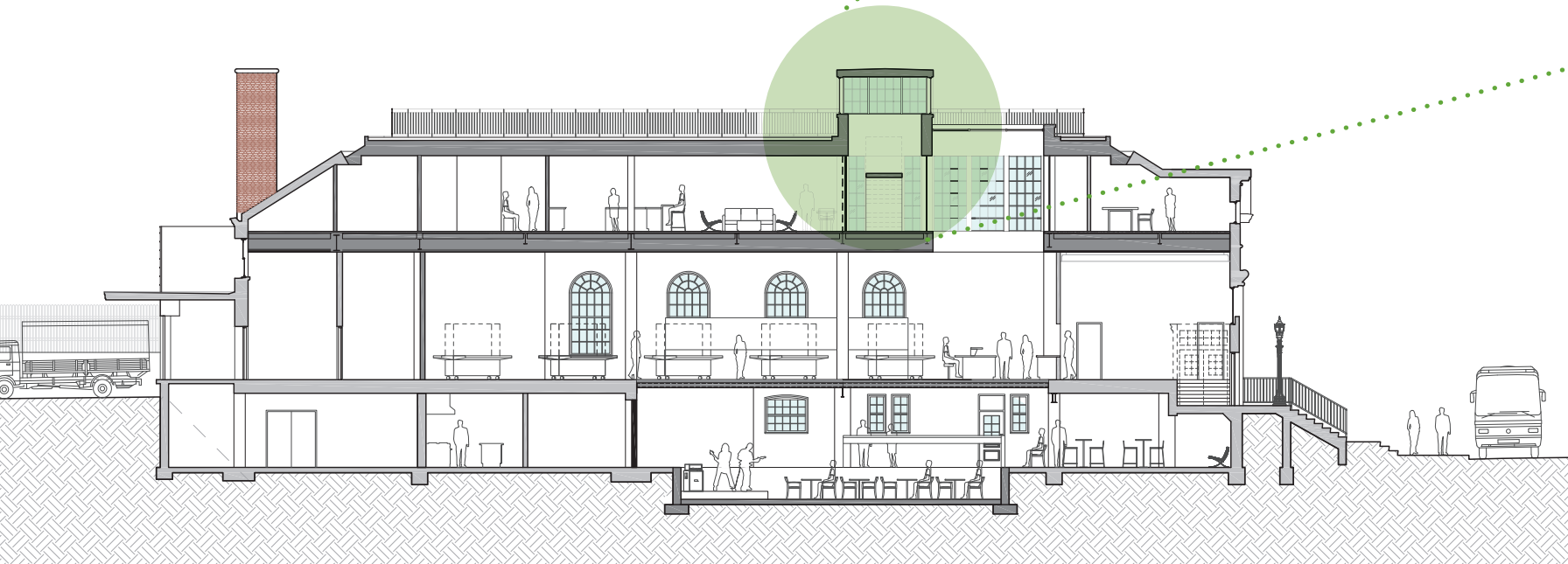


Proposed Longitudinal Section with Stair Headhouse Lantern:



1 - Proposed Roof Plan:

3 - Headhouse Lantern Detail



2 - Proposed Longitudinal Section

**DRAFT**  
04 DECEMBER 2015

**DRAFT**  
04 DECEMBER 2015

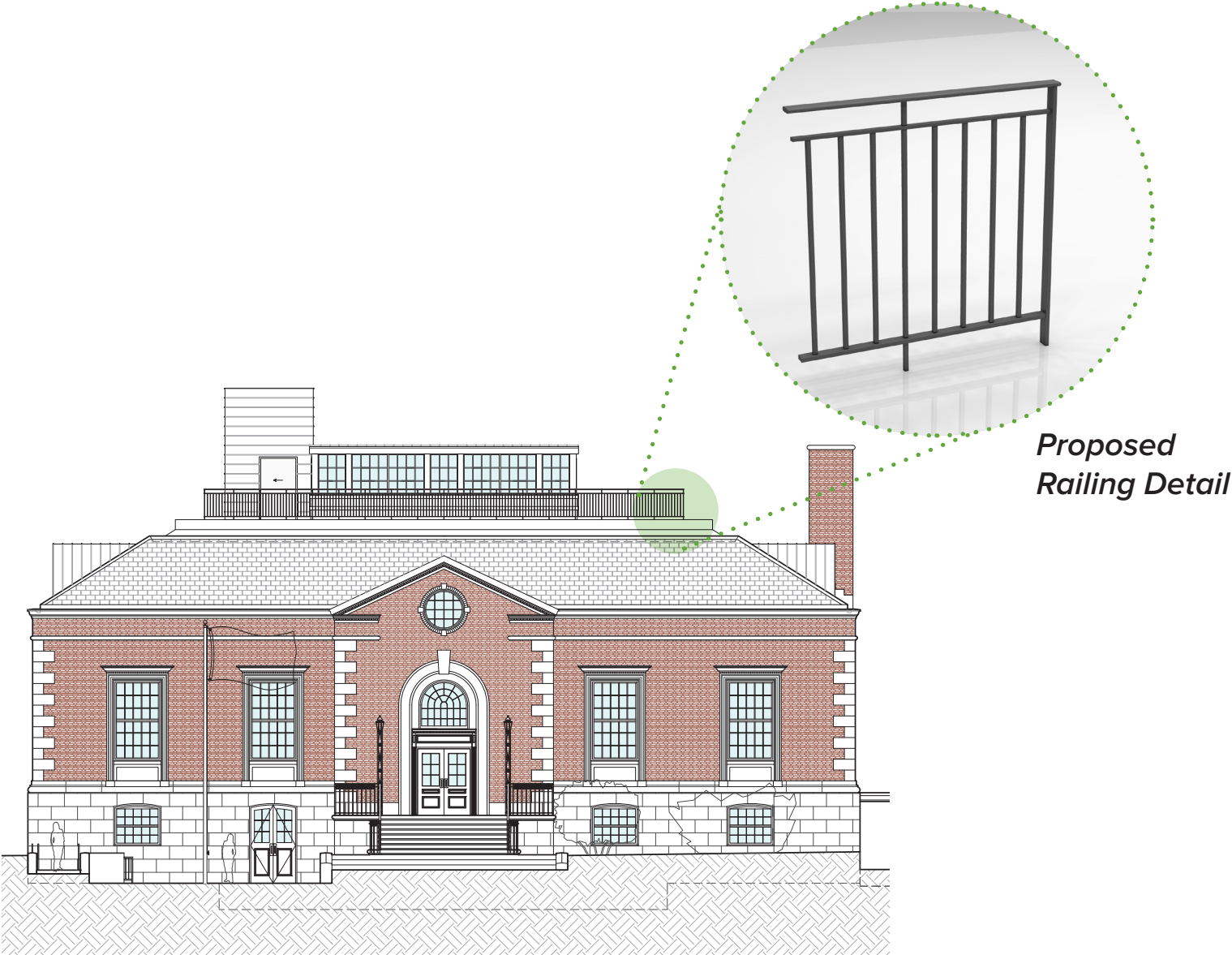
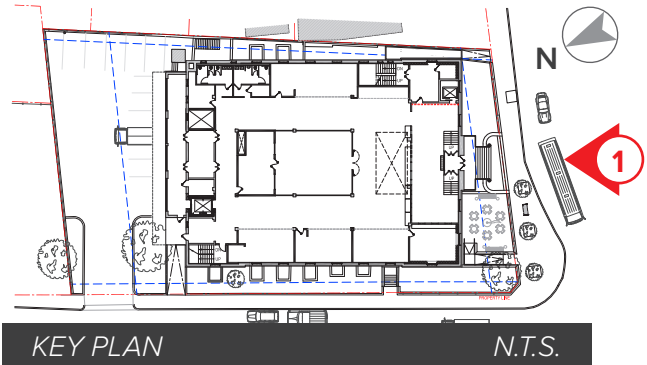


# UNION SQUARE FORMER POST OFFICE

## *Supplemental Information*

**DRAFT**  
04 DECEMBER 2015

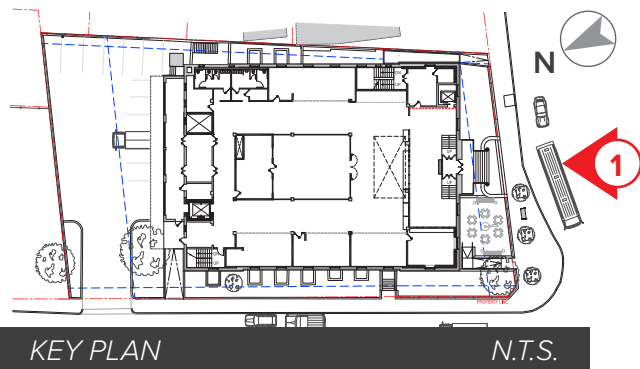
# Proposed Rooftop Perimeter Railing



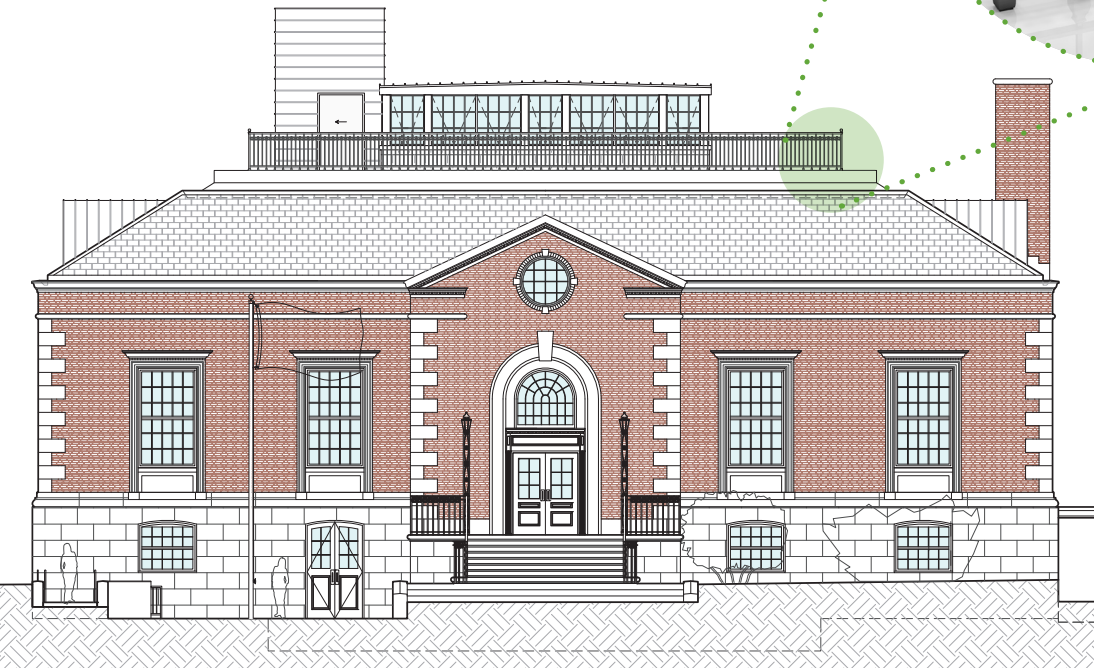
**1 - Proposed South Elevation:**  
*Rooftop Railing Modern and Minimal*

**DRAFT**  
04 DECEMBER 2015

# Alternate Rooftop Perimeter Railing Options



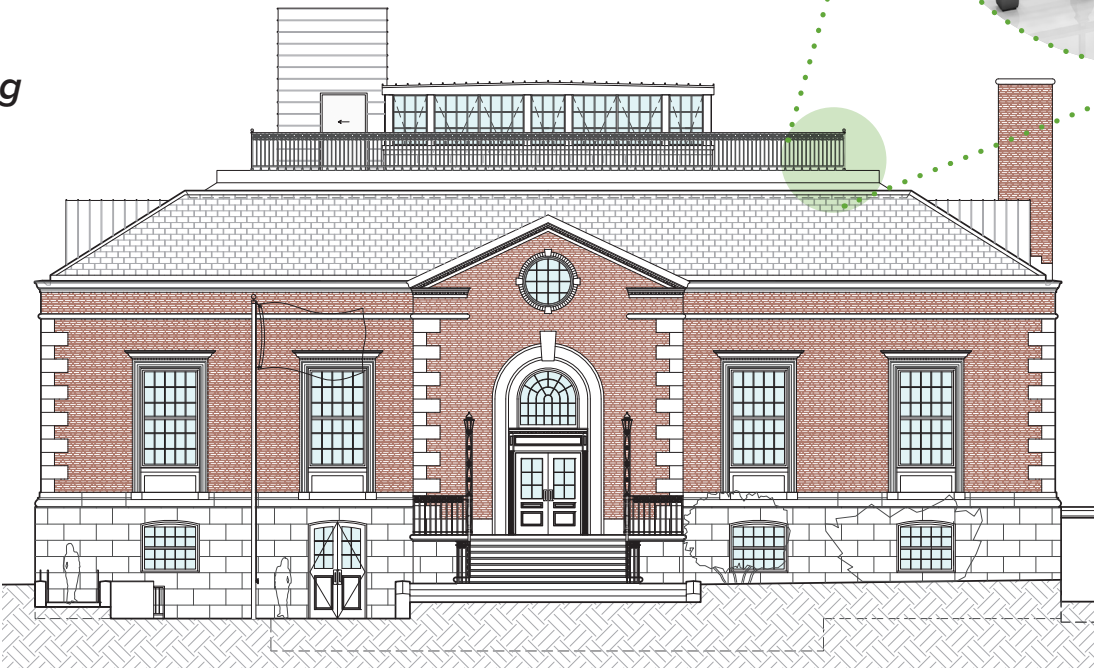
Alternate Railing  
Detail 1



1 - Proposed South Elevation:  
Alternate Rooftop Railing Transitional, Influenced by Original



Alternate Railing  
Detail 2



1 - Proposed South Elevation:  
Alternate Rooftop Railing Traditional, to Match Existing

**DRAFT**  
04 DECEMBER 2015

**DRAFT**  
04 DECEMBER 2015

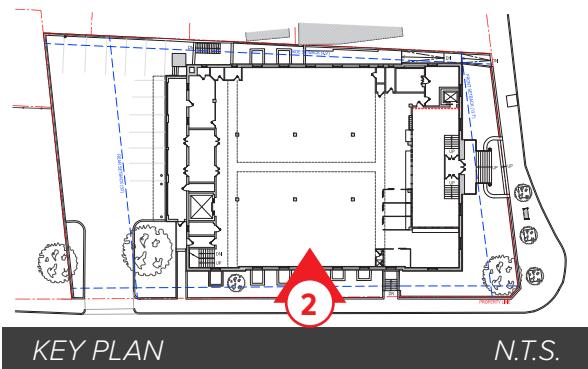
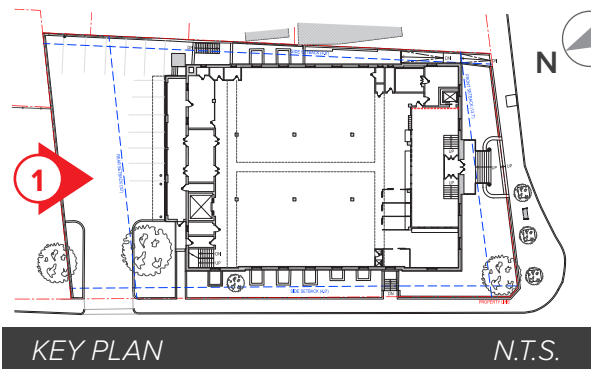


# UNION SQUARE FORMER POST OFFICE

## *Supplemental Information*

**DRAFT**  
04 DECEMBER 2015

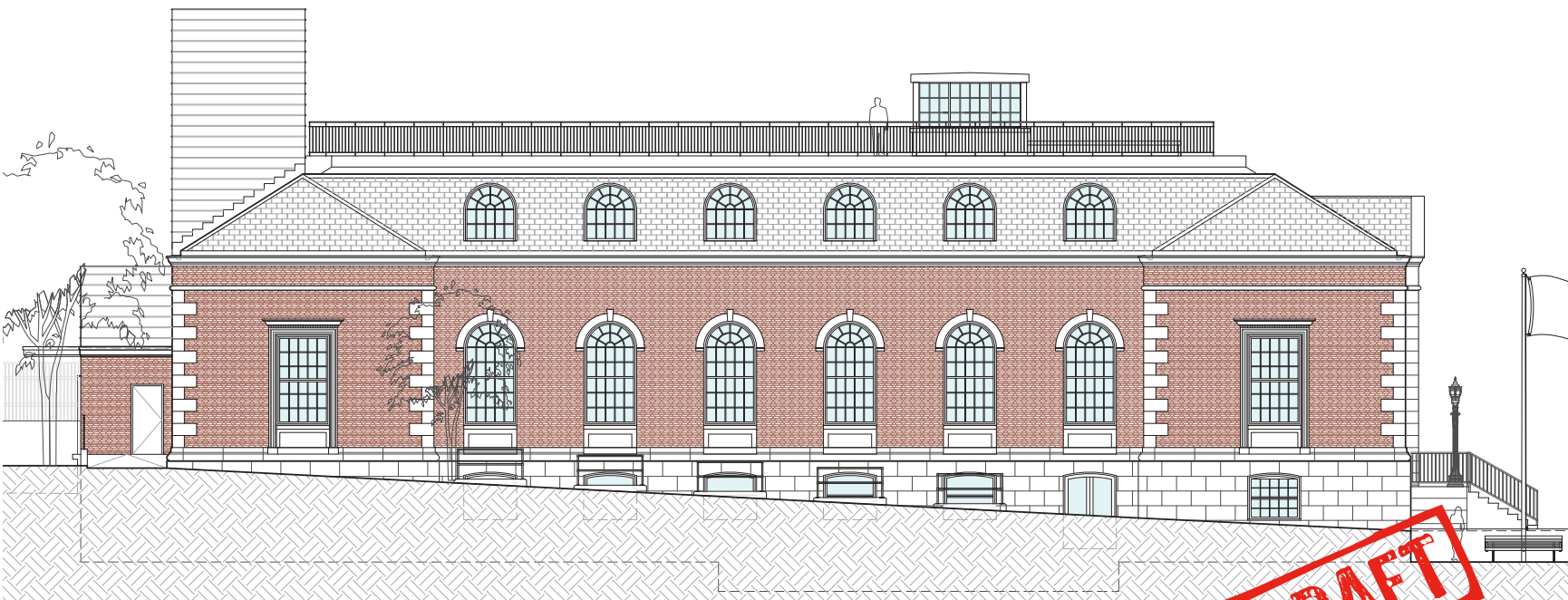
Supplemental Information | Proposed Elevator Shaft



Material Example: Standing Seam Zinc



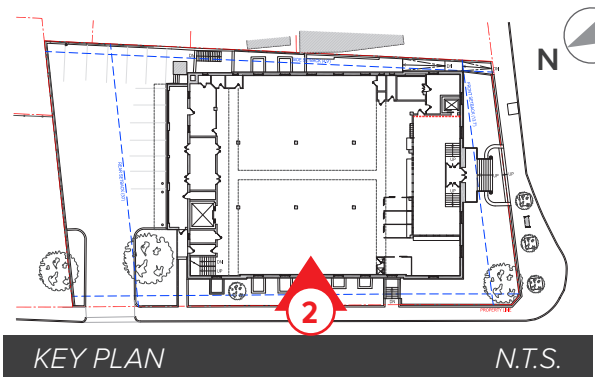
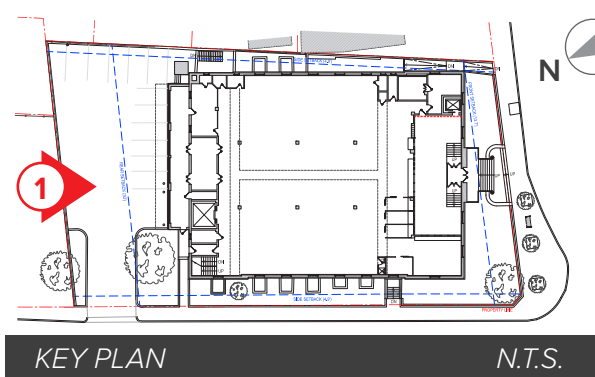
1 - Proposed North Elevation:  
Elevator Shaft: Zinc Clad



2 - Proposed West Elevation  
Elevator Shaft: Zinc Clad

DRAFT  
04 DECEMBER 2015

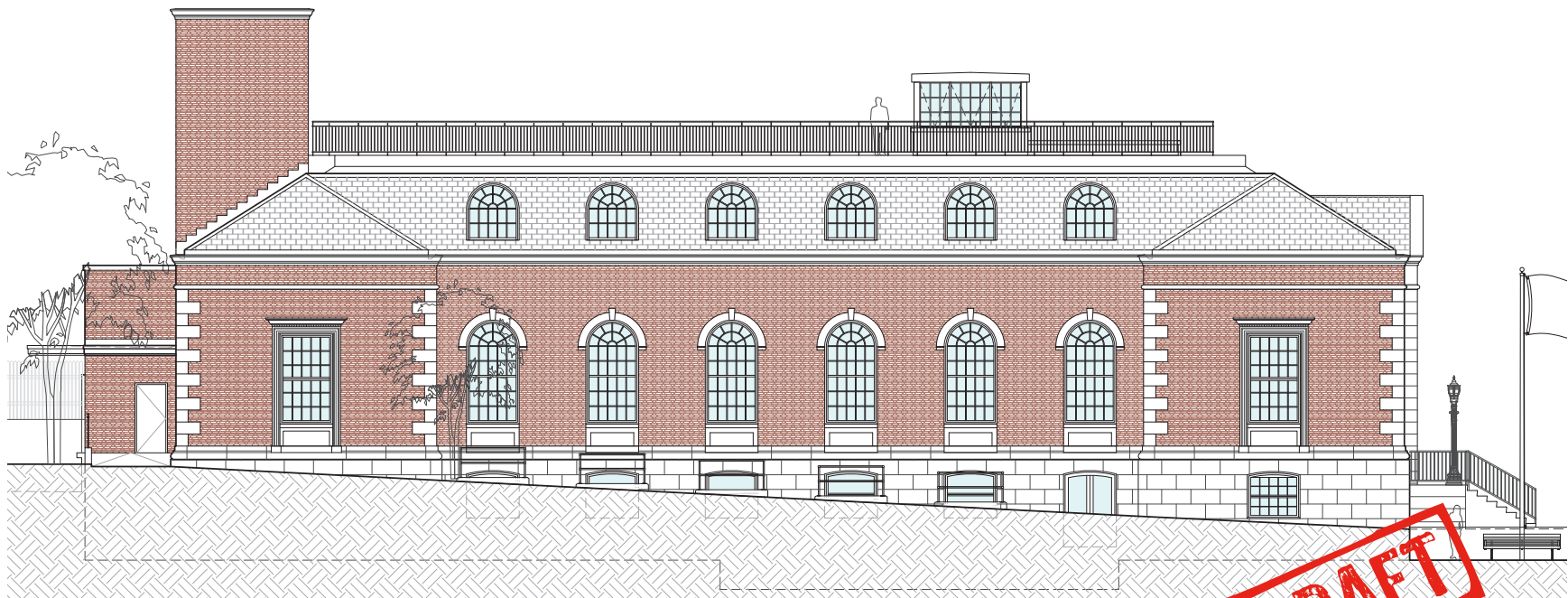
Supplemental Information | Proposed Elevator Shaft Alternates



Material Example: Brick, to Match Existing



**1 - Proposed North Elevation**  
Elevator Shaft: Brick, to Match Existing

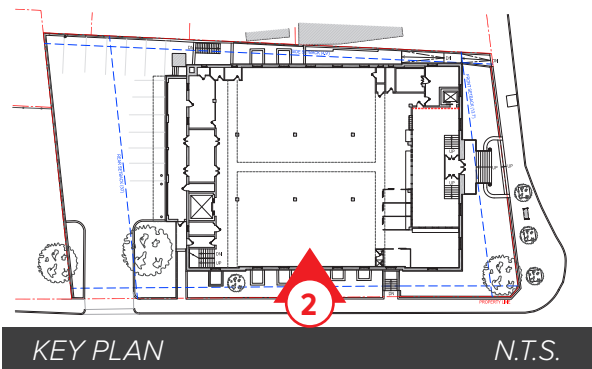
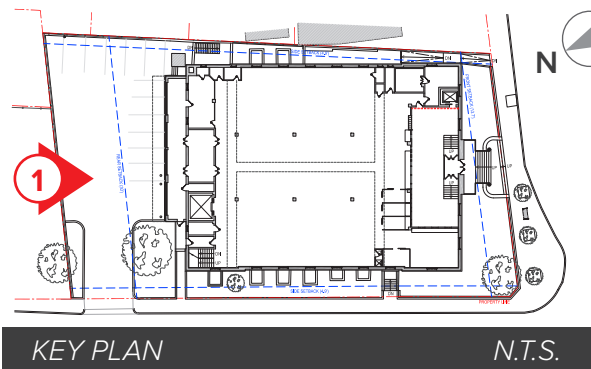


**2 - Proposed West Elevation**  
Elevator Shaft: Brick, to Match Existing

**DRAFT**  
04 DECEMBER 2015



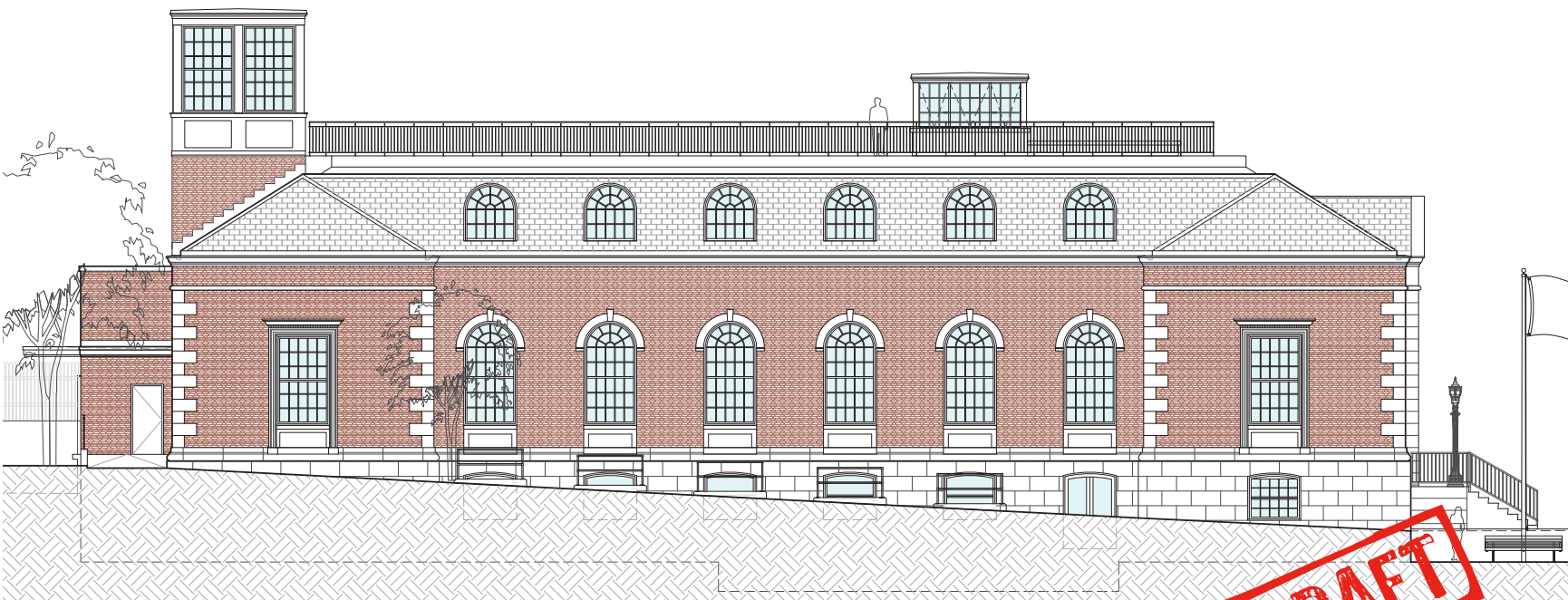
Supplemental Information | Proposed Elevator Shaft Alternates



Material Example: Glass



1 - Proposed North Elevation  
Elevator Shaft: Glass Lantern



2 - Proposed West Elevation  
Elevator Shaft: Glass Lantern

**DRAFT**  
04 DECEMBER 2015



**DRAFT**  
04 DECEMBER 2015

